

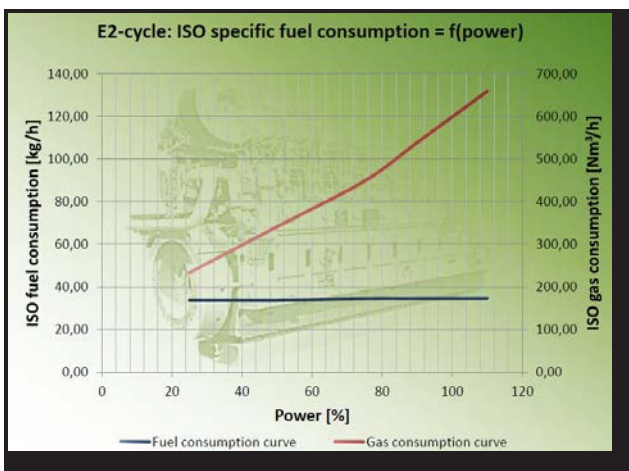
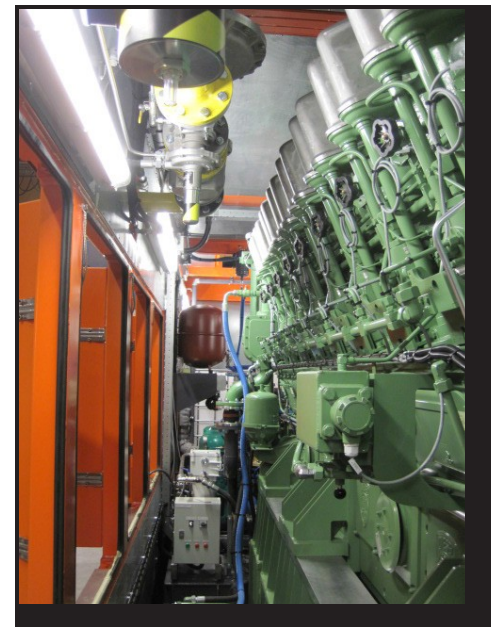
ABC 16 DZD - Dual Fuel 1000 RPM Generators

Intertech Mechanical B.V., has six ABC 16 DZD Dual Fuel Medium Speed Packaged Generator Sets Available for immediate delivery. These units are typically 8 months lead time, we are able to offer these units for immediate delivery and installation. The Anglo Belgian Corporation 1000 RPM Dual Fuel Generators can operate on 100% diesel fuel or on a blend of natural gas and diesel fuel (approximately 92%/8%). These units produce an ISO rated 2,537kW of electrical power at 10,500V at 50Hz.



Technical Specifications

- >> ABC 16 DZD - 1000 RPM, 10.5kV, 50Hz, Medium Speed Generator, Dual Fuel Configuration
- >> Fuel Source: 100% diesel or blend of Natural Gas and Diesel (approximately 92%/8%)
- >> ENNGGA 2,800kW, 10,500V continuous power rated generator
- >> New 45' l x 8' w x 10.5' h container
- >> Fluid containment 120% of engine volume
- >> lined with 80mm Rockwool and perforated aluminum sheeting for sound attenuation
- >> Pedestrian and working access doors on both sides and ends of unit
- >> DC powered lighting inside of container
- >> 185A 4-pole motorized breaker for unit output
- >> Configured for paralleling (up to 8 units) or stand-alone operation
- >> Fully automatic paralleling operation, controlled by an Elmon controller and touchscreen interface



- >> External emergency stop button on each side, exterior of container
- >> Container marked in accordance with CE-certification
- >> Modbus or DDE communications via RS-232 serial port or RS-485EGCP to load sharing network
- >> 3" gas inlet with gas filter, main valve, pressure regulator, and double solenoid valve.
- >> Container cooling via 18kW electric fan, sized for a maximum ambient temperature of Δt 15°C above ambient temperature